

PROGRAM SUMMARY:

THE NEW COMPOSITE OPERATIONS AND TRAINING FACILITY AT DANNELLY FIELD COLLECTS THE VARIOUS FUNCTIONS OF THE BASE INTO A CENTRAL HEADQUARTERS.

PROGRAM STATEMENT:

WHILE THE FORM OF THE BUILDING SETS IT APART AS A PLACE OF AUTHORITY, THE SCALE OF THE EXTERIOR FENESTRATION AND RHYTHM OF MASSING PROVIDE AN APPROACHABLE SCALE FOR THE LEADERSHIP OF THE BASE.

A DOUBLE-HEIGHT SPACE WITH A MEZZANINE LINES THE FRONT OF THE BUILDING. ALIGNED WITH THE FRONT ENTRY, A MAIN STAIR MEDIATES BETWEEN LEVELS, LOFTING FROM THE GROUND TO THIS MEZZANINE IN A GRACEFUL SWOOPING CURVE. A WEIGHTY CAST-IN-PLACE CONCRETE FORM RECEIVES THE BASE OF THE STAIR, ALLOWING ITS INTRICATE STEEL STRUCTURE TO REMAIN ELEVATED ABOVE THE GROUND PLANE.

THE STAIR IS HELD BY A SINGLE STEEL TUBE, CIRCULAR IN SECTION AND CURVED IN TWO DEGREES ALONG ITS LENGTH. WE DESIGNED A CUSTOM CAST ALUMINUM MODULE TO INTERFACE BETWEEN THIS TUBE AND THE TREADS AND RAIL SUPPORTS. WHILE THE OVERALL SWOOPING FORM MIMICS THE MOVEMENT OF FLIGHT, THE MACHINED AESTHETICS OF THE MODULE MIMICS PLANE CONSTRUCTION ITSELF.

THE INDUSTRIAL PALETTE OF THE CAST ALUMINUM MODULES AND STAINLESS STEEL RAIL SUPPORTS AND CABLES IS JUXTAPOSED WITH THE WARMTH OF WOOD IN THE TREADS AND HANDRAILS. TOGETHER, THESE BALANCE A MACHINE AESTHETIC AND INVITATION FOR HUMAN INTERACTION.

T17.01

BUILDING AREA: (SF)
46,000

COST PER SQUARE FOOT:
\$226

CONSTRUCTION COST
\$10,500,000

DATE OF COMPLETION:
FEBRUARY 2009



T17.02



T17.03



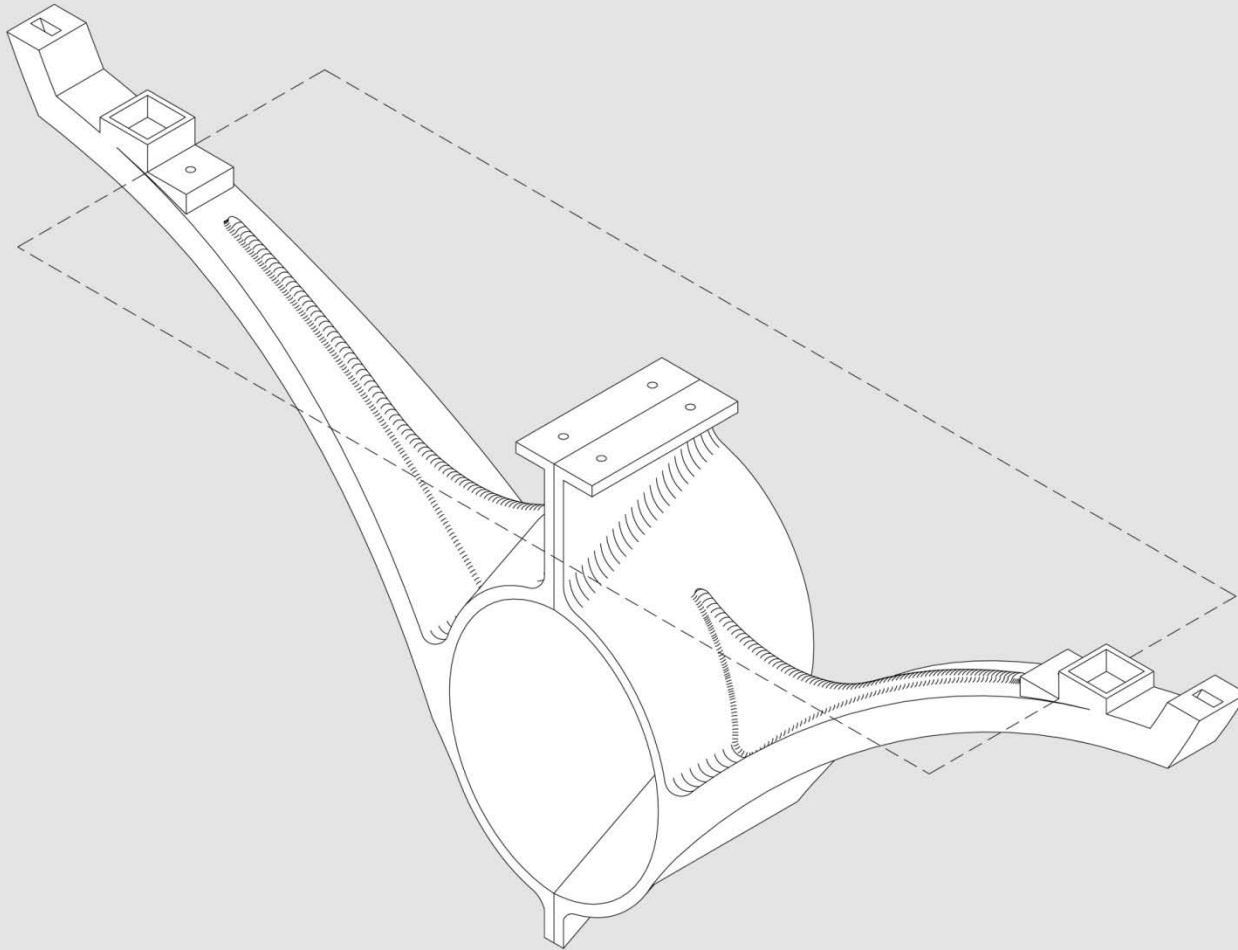
T17.04

T17.05



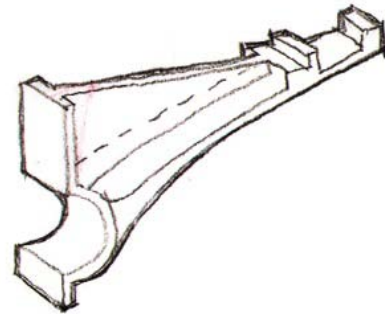
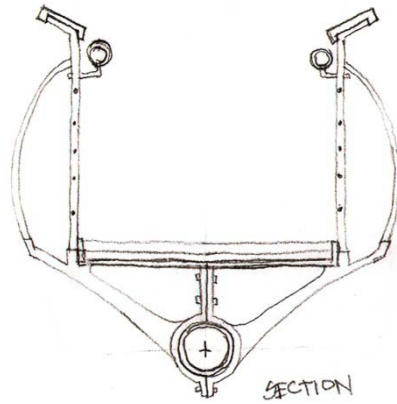
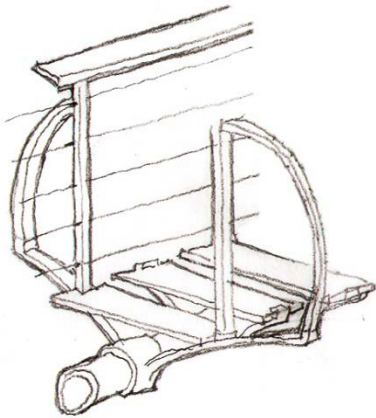
T17.06

AXON OF STAIR COMPONENT



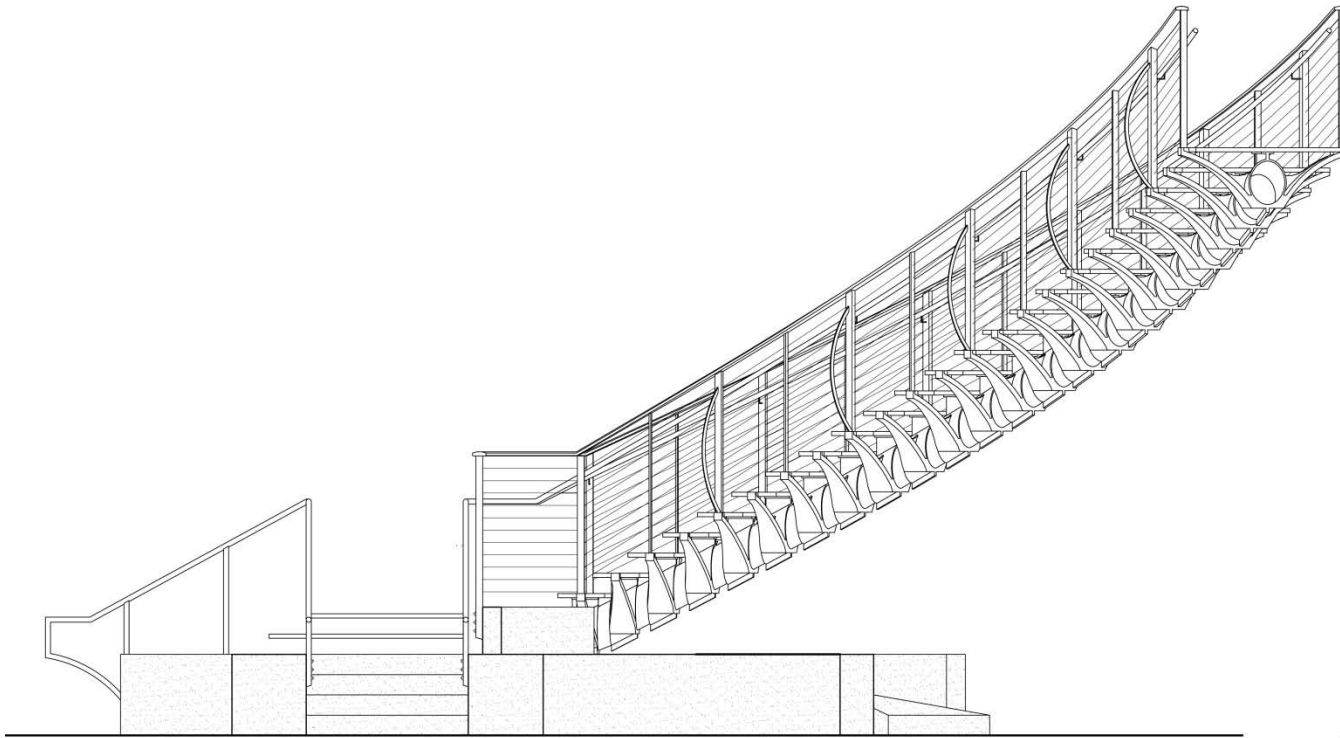
T17.07

DETAIL SKETCHES OF STAIR
COMPONENTS



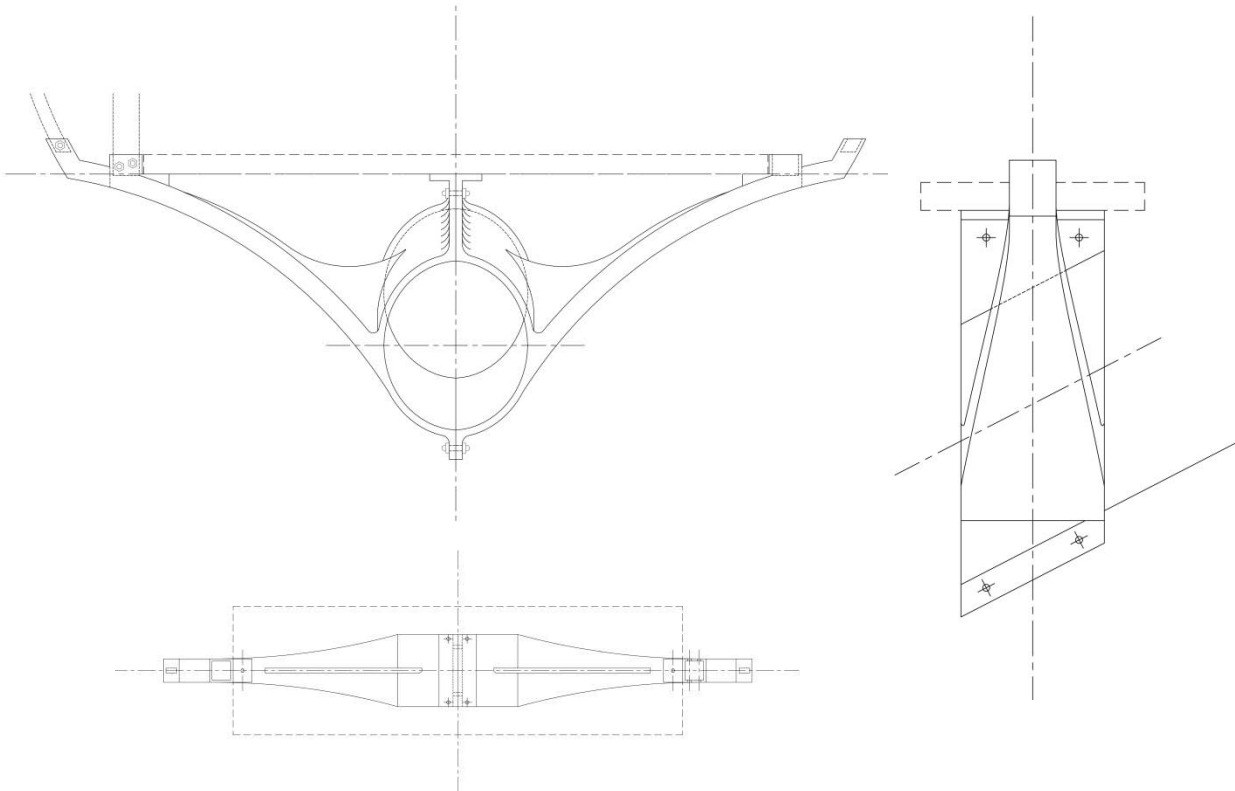
T17.08

ELEVATION OF THE STAIR



T17.09

DETAILS OF THE STAIR
COMPONENTRY



PROJECT NAME:
DANNELLY HQ STAIR DETAIL

PROJECT LOCATION:
DANNELLY FIELD, MONTGOMERY, ALABAMA

OWNER/CLIENT:
DANNELLY FIELD

ARCHITECT(S) OF RECORD:
(NAMES AND ADDRESSES)
SEAY SEAY & LITCHFIELD ARCHITECTS

PROJECT TEAM:
JIM H. SEAY, PLATT BOYD, WES OSMER, CASEY
IVY, JEFF BAZZELL

LANDSCAPE ARCHITECT:
CASEY IVY

CONSULTANTS:
BLACKBURN AND ASSOCIATES
HATTEMER, HORNSBY, & BAILEY
ZGOUVAS EIRING & ASSOCIATES
PROFESSIONAL ENGINEERING CONSULTANTS

GENERAL CONTRACTOR:
BEAR BROTHERS CONSTRUCTION INC.

PHOTOGRAPHER(S):
(PLEASE LIST WHICH SPECIFIC SLIDES GET CREDITED TO
EACH PHOTOGRAPHER(S) LISTED)
ALL MATERIAL PRODUCED BY SEAY SEAY &
LITCHFIELD ARCHITECTS

T17.10