

Program Summary:

The John P. Thayer YMCA consists of a gym, natatorium, cardio and weight-training spaces, racquetball courts, lockers, and administrative functions.

Program Statement:

When completed in February 2010, the John P. Thayer YMCA inherited the legacy of the YMCA in Columbus, GA dating back to 1856 and replaced the original Central YMCA constructed in 1907. Located on a brownfield site on the north edge of downtown, the project is within walking distance of schools, churches, corporate headquarters, restaurants, shopping, and loft apartments in both Columbus, GA and Phenix City, AL via a pedestrian bridge one block from the site. The building's form is modeled after the numerous textile mills which formed the backbone of local industry for more than a century. Main functions are contained in a regimented, heavy brick box while auxiliary functions are housed in glass and steel aberrations, recalling the ubiquitous mill additions while transforming them into light and open spaces which activate the facade. The building is sited and programmatic elements arranged to maximize high-quality north-south light. All occupied spaces except locker rooms are provided with views to the exterior. Lights are switched to allow variable levels of artificial light depending on cloud-cover. Prefinished aluminum sunshades in combination with roof overhangs control glare and solar gain while maintaining views.

T10.01

Building Area: (sf)
51,246

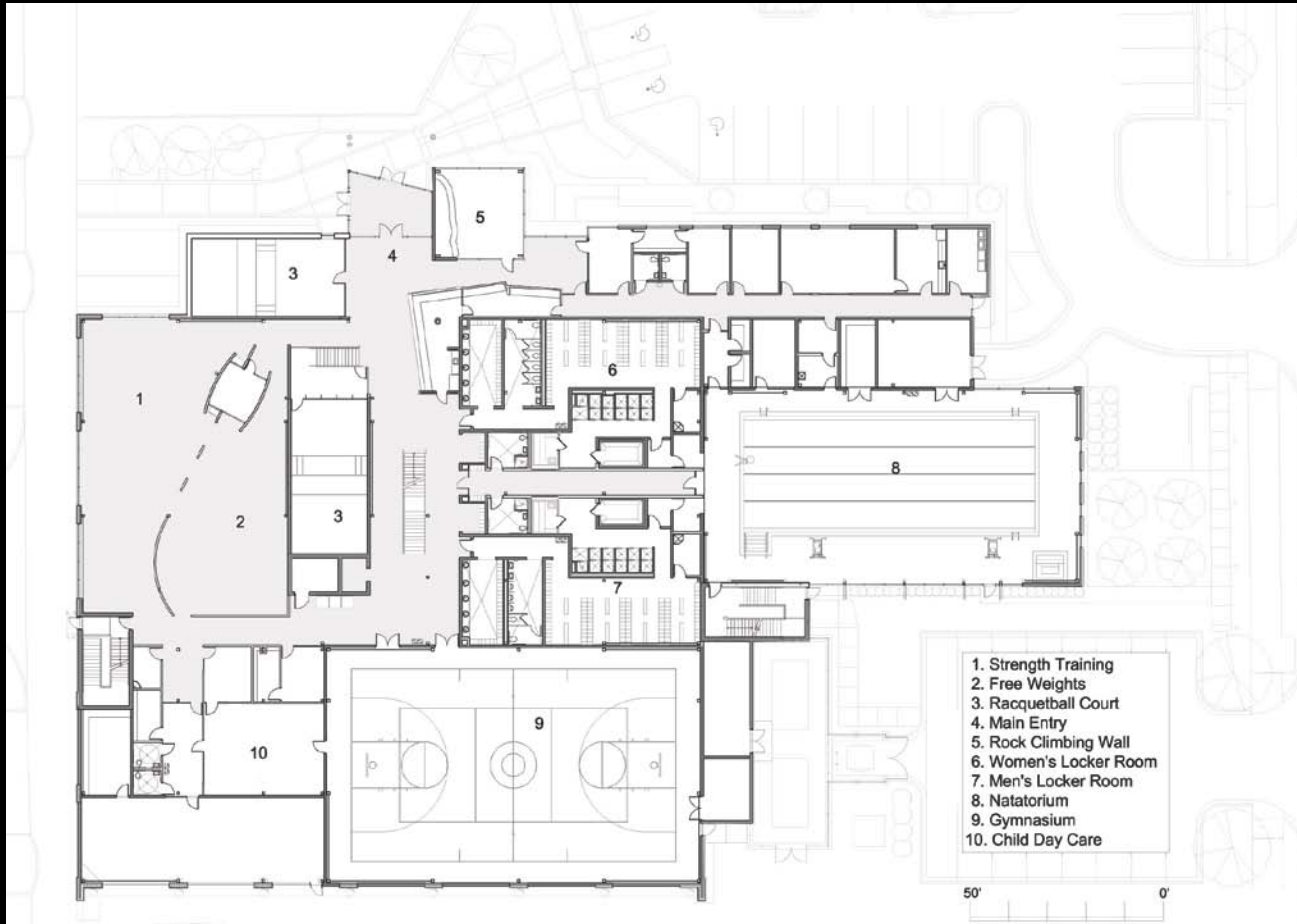
Cost per Square Foot:
\$205.68

Construction Cost
\$10,577,408

Date of Completion:
February 1, 2010

T10.02

The First Floor Plan depicts the “regular box” with the Gymnasium at the lower right and Strength Training in the upper left. The Basketball Court, Natatorium, and Climbing Wall are oriented to take advantage of north/south light. Locker Rooms are internal to allow for easy access from most areas.



T10.03



The glass and steel climbing wall enclosure at the main entrance is visible from several blocks away and acts as a beacon for the YMCA's mission of building strong kids, strong families, and strong communities. The climbing wall is 34 feet high and features four auto-belay systems.

T10.04



The transparency of the natatorium and climbing wall enclosures enlivens the 14th Street facade at dusk. Aluminum composite rainscreen panels, corrugated steel, standing seam metal, and aluminum curtainwall enclose aberrations of form influenced by both historic and contemporary adjacent structures.



T10.05

The boldly-colored ribbon soffit wraps under the elevated track and extends over the membership desk toward the main entrance. Wall sheathing is peeled away to reveal supporting steel structure and add visual depth to vertical surfaces.

T10.06

Double-height space in the exercise area allows natural light to filter deep inside the building and fosters community between members. Bold colors and textures contrast sharply with exposed cast concrete shear walls of the exit stair and elevator.



T10.07

The “woven” masonry wall composed mainly of textured CMU with glazed, groundface, and glass block accents was conceived as an abstracted large-scale industrial loom.



T10.08



Ribbon soffit above the indoor track reinforces the linear nature common in physical activity (ie: swimming, running, cycling, etc.) while interacting in a more dynamic way with adjacent building elements at inevitable changes in direction.



T10.09

Detail of aluminum curtainwall and sunshade fins at climbing wall enclosure.

T10.10



The west facade is tight to the property line, reinforcing the street edge. Awnings and brick patterning above the first floor windows allow the building to blend with the historic commercial and retail fabric along Broadway Street while establishing its own identity. The iconic 'Y' signage projecting over the sidewalk lures curious pedestrians to the facility. Membership has increased over 40% since the facility opened.

T10.11



The ribbon soffit splays and terminates above the membership desk as you enter the building, both welcoming visitors and reducing the scale of the double-height space. The desk, itself conceptualized as an athletic shoe, is layered in rubber floor tiles, resinous panels, and perforated steel mesh. By way of a movable glass wall, the racquetball court to the right is convertible to squash.

T10.12



The natatorium is awash in natural light from tall north windows and clerestory. South-facing glass is covered by a deep overhang to control glare and solar gain. Long-span acoustical roof deck in combination with Tectum wall panels mitigate noise. The steel structure is coated with low-VOC high performance paint.

Project Name:
John P. Thayer YMCA

Project Location:
Columbus, GA

Owner/Client:
YMCA of Metropolitan Columbus

Architect(s) of Record:
(names and addresses)
2WR
166 Commerce Street
Montgomery, AL 36104

Project Team:
Project Executive:
W. Michael Watson, AIA
Principal-In-Charge:
Sam Andras, AIA
Principal | Technical Design
Michael Starr, AIA | LEED AP
Principal | Design:
Scott Allen, AIA
Project Staff:
Lee Martin, AIA
Elsi Eckstein, Associate AIA
Sara Flora

Landscape Architect:
Gullatte and Associates

Consultants:
Civil: SMW Engineering Group
Structural: Wright Engineering
MEP: Peach Engineering
Aquatics: Markey and Associates
General Contractor:
Phillips Construction

Photographer(s):
(please list which specific slides get credited to each
photographer(s) listed)
Jim Roof Creative – Slides 3-9
Epic Images – Slides 10-12

T10.x

Project Identification Slide